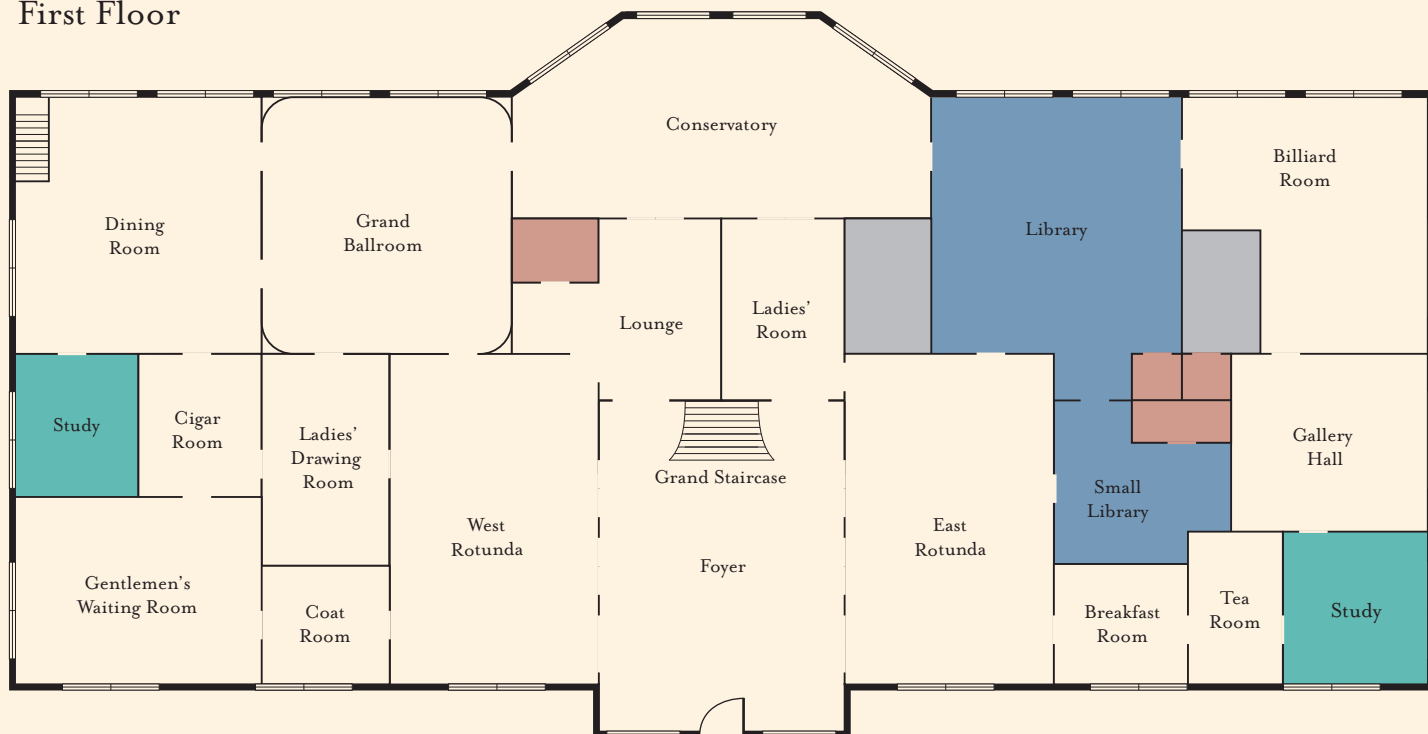


Elm Medona

First Floor



Welcome to Elm Medona

Built in 1909 by Phinneas Pickworth as a gift for his wife, Ariane, Elm Medona served as the family's summer cottage. Set in the middle of a sprawling eighty acres, with over seventy rooms, Elm Medona is world-renowned for its unique architecture, collection of art, and Phinneas Pickworth's astonishing collection of artifacts and curiosities.